

WHERE SOME SEE CHALLENGES

WE SEE A WORLD
OF POSSIBILITIES



We don't just make skyscrapers, arenas and retail parks come to life. We don't just get planes, trains and automobiles moving from one place to another. We don't even just bring unusable land back from the brink. We do all of this and a great deal more – the world over. The extent of our expertise means we can deliver unparalleled qualified strategic services in the built and natural environment.

We work closely with local and global clients and we can solve the whole chain of issues they may have – from the strategic planning phase to the design phase through to completion of the project. We exceed expectations and alter people's lives for the better.

In fact, as one of the world's leading engineering and professional services firms, we are at our best when we face and overcome the most complex challenges. Because where some see challenges, we see a life without limits. We see a world of possibilities.

OUR MISSION

BE A SOLUTION-DRIVEN ADVISOR WITH
OUTSTANDING EXPERTISE.

OUR VISION

ALWAYS BE THE FIRST CHOICE FOR CLIENTS,
PARTNERS AND EMPLOYEES.

OUR VALUES

INNOVATIVE

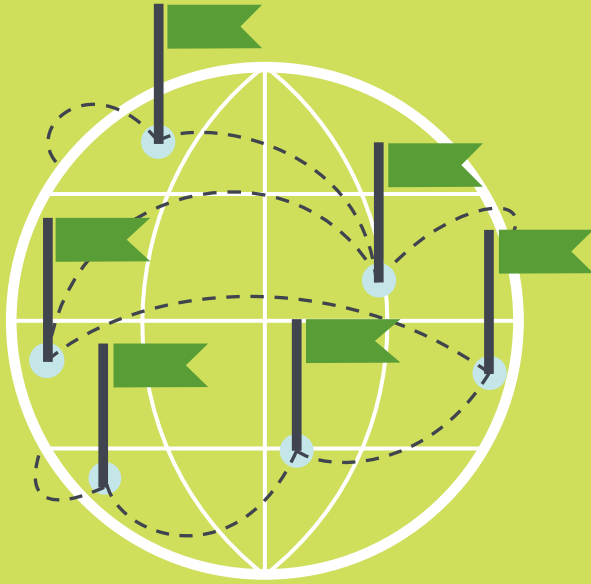
UNITED

CARING



TRUSTWORTHY

PASSIONATE



WE'RE LOCAL

With experts in every corner of the globe, we can respond quickly to any local issue. Our experts have substantial local knowledge and they truly value their relationships with local architects, planners, businesses and governments.

No matter how they grow, what they choose to do, or where they may move, we offer our clients agility and local delivery that's supported by our global reach.

WE'RE GLOBAL

Structural engineers from London to New York. Energy specialists from South Africa to Stockholm. Infrastructure designers from Bogota to Bangkok. Land remediation managers from Quebec to Queensland. Our network of experts and skills reaches far and wide.

WSP | Parsons Brinckerhoff is one of the world's leading engineering professional services consulting firms. We bring together our 34,500 staff, based in more than 500 offices, across 40 countries to provide engineering and multidisciplinary services in a vast array of industry sectors, with a focus on technical excellence and client service.

34,500

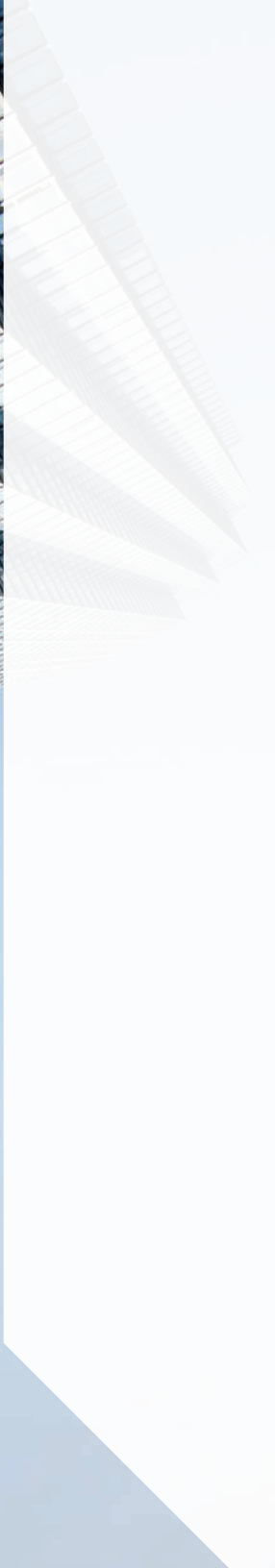
EMPLOYEES

500

OFFICES

40

COUNTRIES



PROPERTY AND BUILDINGS

How do you measure the success of a building? It performs beyond all expectations. It attracts, even delights, those who visit, live in or work in it. It uses energy in the most cost-effective and sustainable way. It sits sympathetically within its surroundings or stands out as a beacon. Or, ultimately, it stands the test of time.

We aim to meet all these criteria and more when we bring our specialist skills to any building project. From The Shard in London to the World Trade Center in New York, the Marina Bay Sands Resort in Singapore to the Zayed National Museum in Abu Dhabi, all our buildings more than measure up.

TRANSPORT AND INFRASTRUCTURE

Aging and growing populations, rapid urbanization and greater demand for connectivity: governments around the world require more resilient and sustainable urban and transport infrastructure. A country's economy and quality of life depend on well-run and maintained infrastructure and systems. That's where we come in.

With more than 14,000 seasoned transport and infrastructure professionals, we are one of the world's largest service providers. We plan, analyze, design and manage projects for rail, transit, aviation, bridges, tunnels, highways, ports, roads and urban infrastructure.

As we deliver comprehensive, innovative and cost-effective solutions within budget and on time, we take great pride in our clients' satisfaction. Each project is unique, but all of them benefit from our global expertise, our understanding of local communities and our experience to ensure their success.

STRATEGIC CONSULTING

Changing economic conditions, evolving government priorities, and emerging technologies are among the challenges faced by organizations today. As they aspire to stay competitive, we are in a prime position to guide them by sharing our business know-how and global “lessons learned”. Because understanding, identifying and managing risk is at the core of everything we do. We help clients protect their interests and we provide front-end consulting and management services to clients that procure, develop, manage, finance and invest in infrastructure and property assets.

We have extensive sector understanding and worldwide experience. Combined with commercial and contractual transaction acumen, we offer specialized services such as project financing, due diligence, asset management, organizational improvement, economics, as well as traffic and travel demand forecasting.

ENVIRONMENT

Our impact on the environment matters. In the face of climate change, the need to maintain a balance between our human needs and environmental impact has become more crucial than ever.

We are experts in the built and natural world, with specialists working with and advising businesses and governments in every area of the environment sector. They are there to ensure that we all enjoy a sustainable future. They work and advise in energy supply and renewables, acoustics, noise and vibrations, environmental due diligence and “future cities”, to name but a few.

INDUSTRY

When it comes to industry, we couldn't be more industrious. We work in almost every sector from food and beverages to pharmaceutical and biotechnology, and from chemical to process energy.

Our specialists offer a unique blend of skills. They have a deep understanding of industrial and energy processes, and the engineering expertise required to plan, design, build and operate a new plant, or to automate equipment in an existing industrial facility. Few can offer this breadth of capability combined with such rich process engineering expertise.

MINING

Cost issues. Resource nationalism. Complexities of mining deeper underground. Optimizing existing mines. Environmental concerns. The challenges facing the mining sector seem endless.

It's no wonder so many clients come to us for our expertise and support. We work with them throughout the project life cycle – from conceptual and feasibility studies to addressing social acceptance issues; and from detailed engineering and complete EPCM to site closure and rehabilitation.

Our expertise runs deep and spans everything, including resource and reserve modelling, metallurgical testing, geotechnical and mine design and detailed engineering for mining infrastructure. Our work takes us all over the world for the smallest to largest award-winning projects.

OIL AND GAS

With over 40 years of experience in Canada, our Oil and Gas expertise now spans across Australia, the UK, the US and the Middle East. In successfully delivering projects ranging from 50 man-hours to capital projects up to \$1.2 billion, our Oil and Gas team has the proven flexibility and manpower to handle client EPCM requirements across all stages of the project life cycle. Our broad scope includes projects in sectors such as carbon capture and storage, gas compression and storage, gas processing and treating, metering and automation, oil and SAGD, power generation, pipelines, well-sites and tie-ins.



POWER AND ENERGY

Onshore and offshore wind. Solar power. Bioenergy. Hydropower. Thermal power. These are all renewable powers of the future. We are committed to a sustainable future and we offer our energy sector clients complete solutions for all aspects of their projects, be they large-scale energy plants, smaller on-site facilities or retrofitting and efficiency programs.

We can advise and work on every stage of a project – from pre-feasibility to design, operation and maintenance and onto decommissioning. We offer long-term operational management support services and we get involved with the first feasibility studies, providing advice on aspects ranging from technical, financial and environmental issues to engineering design and energy simulations during the construction phase.

PROJECT DELIVERY

One of our trademarks: successful delivery of projects in line with stakeholder objectives. We have extensive experience in global project delivery and we leverage our deep technical expertise and asset knowledge. We are talented professionals who assess and understand client goals as well as technical, environmental and commercial issues. This enables us to plan and implement projects efficiently, with a focus on safety, cost, schedule and quality.

From the outset, we establish a strong partnership that protects our client's interests throughout the planning, implementation and commissioning stages. We are a trusted advisor to our clients around the world, providing multiple services across all major market sectors and delivery methods. Our team is committed to technical excellence and innovation and ensures that we offer the right plan and delivery strategy to achieve optimal results.

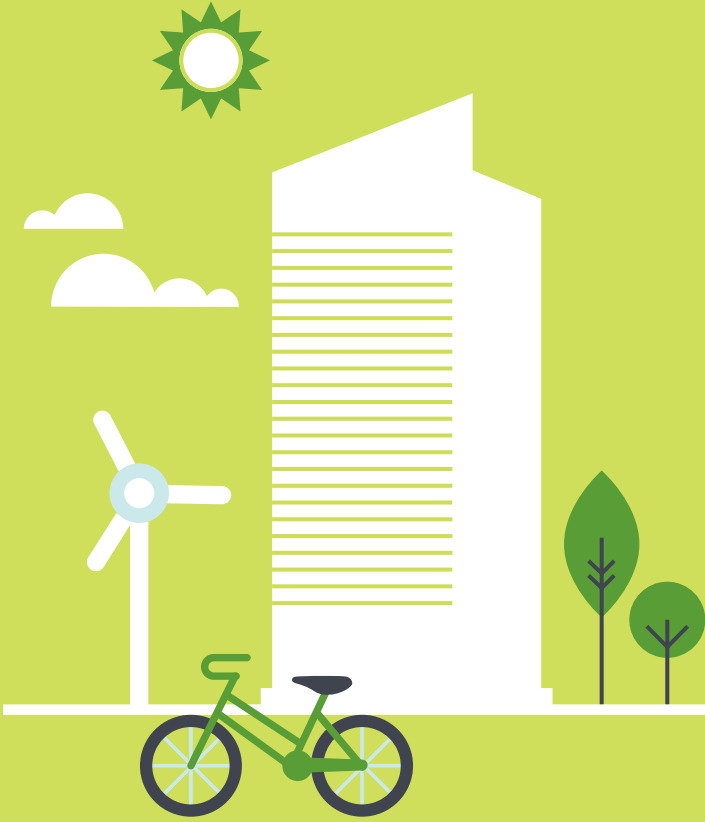


OUR PEOPLE MATTER

What do you see: a challenge or a world of possibilities?

We are involved with a diverse range of projects – from some of the world’s most iconic buildings to advanced sustainable solutions and exciting heritage challenges. What we do has positive and sustainable impacts on local communities and on some of the world’s largest cities. This means that we can offer every employee a unique range of career possibilities and the chance to work closely with peers from every corner of the planet.

We want each employee to take an active part in achieving our mission so we stay agile and foster a fun and rewarding work environment that gives us energy. Every day, we learn from each other and join forces to make sure that we bring the best value to each project, for every one of our clients.



WE MAKE PROJECTS MORE SUSTAINABLE

One of the most interesting things about us is that we can truly integrate sustainability into every part of our operations. Through our expertise, our design work and advisory services, we can support our clients in making their project more sustainable and help them see the value of being “future ready”.

Indeed, we achieve excellence against current standards, but we know we need to look beyond this to the needs of the future. We believe that, as a leading global professional services firm, this is how we will be recognized for outstanding sustainable business practices that create long-term value for our organization, our clients, our investors and shareholders, our communities and our environment.

The future is exciting, and we can be rightfully proud that our work helps to create resilient assets and protects the environmental quality that will support us for years to come.



OUR PROJECTS

STANDING TALL

ONE WORLD TRADE CENTER, US

At a symbolic height of 541 m (1,776 feet), One World Trade Center provides an inspirational and **enduring landmark** in the New York City skyline. The tower's footprint of 61 x 61 m is the same size as that of the original Twin Towers. We provided **structural engineering services** to meet or exceed anticipated, more demanding security codes and standards. The new 102-storey tower provides an extraordinary level of life safety features including those that will make it an unprecedented archetype of **security and blast resistance**. In addition to its iconic design, it provides a **world-class model of energy efficiency and environmental sustainability**.



MULTIPLE AWARD- WINNING HIGH-RISE

THE SHARD, UK

We are the **structural engineers for the new landmark** of the London skyline and **the tallest building in Western Europe**. We used an **innovative top-down construction technique** for this multiple award-winning mixed-use building with complete public access. The 310-metre tapered tower houses a mix of recreational, residential and commercial facilities. It is crowned with a steel-framed pinnacle clad with shards of glass designed to blend into the sky.



BRINGING HOCKEY BACK TO THE NORTH

VIDEOTRON CENTRE, CANADA

Quebec's long-awaited amphitheatre opened in 2015 after a three-year building process hailed as **a model of cost-effective, efficient construction**. The multi-purpose arena, which can seat more than 18,000 people, is set up to accommodate the potential return of the Quebec Nordiques ice hockey team and to host cultural events of international scale. We served as **project manager throughout the process**, playing a key role in **delivering this ambitious scheme on time and budget**. Our work included preparation of a realistic budget and work schedule, management plans for all aspects of this massive undertaking, as well as directing and supervising the professional and engineering teams and overseeing the work of the construction manager.





AFRICA'S FIRST GREEN CITY

MENLYN MAINE, SOUTH AFRICA

This project stimulates a paradigm shift in how South Africans live, work and play. It is bringing residential neighbourhoods, retail spaces and office buildings together to create a **healthy mixed-use city environment** while ensuring **sustainability for future generations**. We are providing structural and civil engineering services and playing an instrumental role in outlining the sustainability strategy and helping achieve a minimum **four-star Green Star rating** for much of the Menlyn Maine development. The precinct aims to **consume 50% less energy** than the average commercial building and generate 33% less greenhouse gas emissions.

SUSTAINABLE SOLUTIONS FOR A SPECTACULAR RESORT

MARINA BAY SANDS INTEGRATED RESORT, SINGAPORE

The Marina Bay Sands Integrated Resort is **one of Singapore's signature landmarks**. Designed by Safdie Architects, the complex features three towers topped by **a stunning sky garden**, and includes a luxury hotel, convention centre, casino, museum, theatres, retail facilities and a waterfront esplanade. We provided lead consultancy services for the **mechanical, electrical and plumbing systems** design, as well as coordination and supervision during the construction stage. Our sustainability-focused designs helped make the property Singapore's single-largest building to get the **Green Mark Platinum Award** from the Building and Construction Authority, and the first MICE facility in South East Asia to obtain an ISO 20121 Sustainable Events Management System certification.





OUR PROJECTS

Image courtesy of City of Stockholm and Dynagraph

BECOMING A WORLD LEADER IN SUSTAINABLE ENERGY

STOCKHOLM ROYAL SEAPORT, SWEDEN

We are providing **sustainable masterplanning**, energy, waste and water planning, soil remediation, infrastructure and landscaping services for the waterfront community built on 236 ha of former industrial land and scheduled to be completed in 2025. The client's desire for **world-leading sustainability credentials** means that total CO₂ emissions per person per year will be much lower than the current average in Stockholm – less than 1.5 tonnes compared with 3.4 tonnes. Another aim is to be **fossil-fuel free by 2030**. We are therefore providing services for small-scale, local renewable electricity and adaptations for climate change.

MEGA SERVICES FOR A MEGA RESORT

GALAXY MACAU™, COTAI, MACAU SAR, CHINA

Galaxy Macau™ is one of **the most significant additions** to the rapidly expanding Cotai Strip of Macau, one of the world's largest gambling hubs. It comprises **three five-star hotels** with a total of 2,200 luxury rooms, a 200,000 m² gaming hall, a 2,700 m² high-end retail area and a **6,000m² wave pool**. We were responsible for the design and installation supervision for all building services, **from concept design to final commissioning.**





SHOP OR SKI IN EGYPT

MALL OF EGYPT, EGYPT

At 190,000 m² and with **more than 400 shops and a snow park**, Mall of Egypt in Cairo is one of **North Africa's largest shopping centres**. We are the lead consultant on the snow park, which includes a 200-metre **real snow indoor ski slope**, designed to work as a very well insulated box, comparable to a huge **household refrigerator**. We are providing all engineering services to the mall and ensuring the design uses as little energy as possible – aiming for **LEED Gold accreditation**.





ENGINEERING ART

ZAYED NATIONAL MUSEUM, UNITED ARAB EMIRATES

Abu Dhabi's **colossal museum** is contained within an elevated mound that incorporates a lobby, gallery spaces constructed as suspended 'pods', a pavilion for special exhibitions and a falconry centre with live displays. Sitting on top of the mound are five lightweight steel structures, **sculptured aerodynamically to work like the feathers of a bird's wing**. Features include a variety of **passive design strategies** such as natural ventilation and cooling which adapts to seasonal changes. We were responsible for making the architect's ambitious concept buildable and functional.



WORLD-CLASS SCHOOL FOR FUTURE ENGINEERS

SCHOOL OF COMPUTER SCIENCE, ENGINEERING AND MATHEMATICS, AUSTRALIA

The new **18,000 m² facility** developed for Flinders University in Adelaide will accommodate the school of Computer Science, Engineering and Mathematics (CSEM). The school serves a large population of post-graduate students and academic researchers as well as representatives from private industry. The spaces within the building are capable of **internal reconfiguration to adapt to changing demand**. We engineered all building services for the project and facilitated the design of the building's **bespoke closed cavity facade (CCF)** system. This solution is unparalleled in its performance and a first in Australia, and has offered a **30% improvement** over national construction code requirements.





ENGINEERING THE LARGEST BUILDING IN SCOTLAND

QUEEN ELIZABETH UNIVERSITY HOSPITAL, UK

The Queen Elizabeth University Hospital in Glasgow was the largest National Health Service construction project in the UK and it was **delivered under budget and ahead of schedule**. It is not only Scotland's largest ever building, but **one of the largest and most advanced adult acute hospitals** in the UK. The campus includes a 1,109-bed hospital for adults and 256-bed Royal Hospital for Sick Children, situated in an area equivalent in size to 11 soccer fields. We provided civil and structural engineering, fire engineering, sustainability and geo-environmental services and implemented **innovative solutions to meet ambitious environmental targets**.

SETTING THE STANDARDS IN HIGH-SPEED RAIL IN THE US

CALIFORNIA HIGH SPEED RAIL, US

One of the largest, most ambitious public transportation programs in US history, the California high-speed rail system will connect California in a way it has never been before. It will allow passengers to travel from Los Angeles to San Francisco in under three hours, compared to almost six hours by car. Projected to have 20 million annual riders at launch and **40 million in 2040**, the system is the backbone of a rail modernization program that will transform the way Californians travel and live and provide significant economic and environmental benefits.

We are the Authority's **Rail Delivery Partner (RDP)**, a seven-year engagement that will take the program from the **planning, environmental and preliminary design phase** through **project delivery and operations**. We also support **stakeholder outreach, commercial planning and procurement strategies**.



Image courtesy of the California High Speed Rail Authority



PREPARING FOR GROWTH WITH NEW TERMINAL DEVELOPMENT

HEATHROW AIRPORT, UK

We are proud to have delivered the complete building Services, ICS designs and project management services, creating a **world-class terminal**. Embedding strong sustainability credentials from the outset led to an **environmental award-winning design**. The use of BIM provided **clarity and true collaboration**, facilitating early decision making to realize **significant time and cost savings**. Many design and construction ideas were tested, assessing technical and program advantages, and using on-screen 'walk throughs'. We achieved enhanced safety and quality by reducing site activities in favour of extensive off-site manufacturing. The complex brief included stringent regulations and standards developed by the client over many years to ensure the resilience, security and maintenance requirements while providing a best-in-class passenger experience.

Our **future-proofed designs** are compatible with changing technology and the constant evolution of air travel.

ACTING AS THE TRUSTED ADVISOR TO STIMULATE GROWTH

CORNWALL STRATEGIC PARTNERSHIP, UK

We have been the **strategic partner** of Cornwall Council and latterly its arm's length **delivery partner** for the last five years. Cornwall is **one of the UK's most visited counties, with both geographical and economic challenges**. Our partnership involves developing **transport schemes that promote economic prosperity and lock in the benefits of the tourism influx**. Our work is diverse, from harbour improvements and wholesale changes to bus services, and new link roads designed to unlock sites of economic importance. We work closely with the Council's in-house delivery agent, Cormac Solutions, with staff co-located and working as an integrated team to provide the best solution for the issues at stake.





UNLOCKING AUCKLAND'S POTENTIAL

WATERVIEW CONNECTION, NEW ZEALAND

The Well-Connected Alliance is building the NZ\$1.4 billion Waterview Connection, the **largest road project ever undertaken in New Zealand**. In addition to the construction of a new six-lane motorway, the project includes twin tunnels, road bridges, cycling and pedestrian infrastructure, new recreational facilities as well as community and environmental improvements. The project features **Australasia's largest road tunnel**, constructed using a custom-built tunnel boring machine (TBM) called Alice. With a cutting diameter of 14.4 m, it is the **10th largest machine of its kind ever built**. Acting as **design partner**, we are providing design management; tunnel, fire and life safety; geotechnical, mechanical and electrical systems design services; and design support during construction. Our team will continue as a **partner for the operation and maintenance period**.

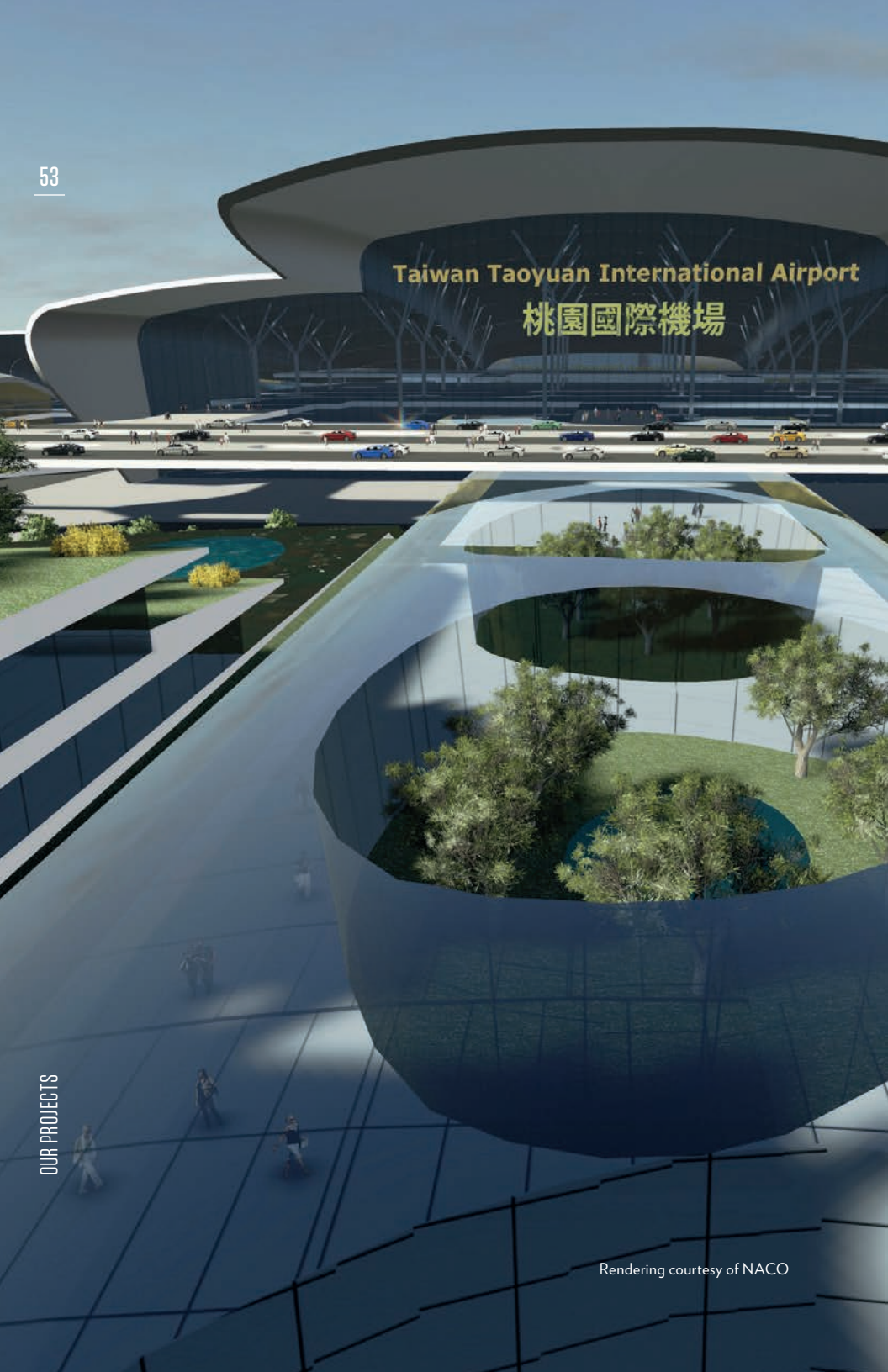
INNOVATIVE UNDERWATER TUNNELLING

ELIZABETH RIVER TUNNELS, US

Under a public-private partnership, the Virginia Department of Transportation entered into a comprehensive agreement with Elizabeth River Crossings to build a new Midtown Tunnel, rehabilitate the existing Midtown Tunnel and the Downtown Tunnel, and extend the Martin Luther King Freeway in the Hampton Roads region of Virginia. We are the **lead designer to the design-build team**. The centerpiece of the project is a new two-lane, 1,280-metre immersed tube tunnel under the Elizabeth River parallel to the existing Midtown Tunnel. The new Midtown Tunnel will be the **first deep-water concrete immersed-tube tunnel in North America**. The project will reduce travel time and improve roadway safety while stimulating the local economy by creating or improving access to jobs, generating more than \$1 billion in construction works, and increasing regional productivity.



Taiwan Taoyuan International Airport
桃園國際機場



SPREADING ITS WINGS TO WELCOME MORE TRAVELLERS

TAIWAN TAOYUAN INTERNATIONAL AIRPORT, TAIWAN

With passenger volumes expected to increase to **60 million in 2030**, Taiwan's airport authority is embarking on the Terminal 3 expansion of its Taoyuan International Airport. As the lead member of the joint venture acting as general consultant for the project, we provide **master planning and program management** services. The Terminal 3 Area Project is Taiwan's most important construction project and also the **flagship of the Taoyuan Aerotropolis Plan**, which will include a new terminal building, concourses, multi-functional building, energy center, and aprons. The main challenge is to construct the new terminal site while the airport functions as usual. In addition to being a **transportation centre**, the **smart and green new terminal will offer entertainment and leisure facilities to visitors**.

UPGRADING MONTREAL'S ENTERTAINMENT DISTRICT

QUARTIER DES SPECTACLES, CANADA

As part of its 2025 Strategic Plan, Montreal has made its entertainment district, Quartier des spectacles, a top priority and launched **one of the largest urban regeneration projects** in recent years. This important cultural destination hosts more than forty events and festivals each year. The project entailed the **rehabilitation of a 1,000 m² area as cultural space as well as 25,000 linear meters of service networks**. Conciliating the cultural, commercial, institutional and residential needs within the district, it also acts as a catalyst to further develop the downtown sector. Our multidisciplinary team took care of the **design, engineering and construction management of the project**. The architect's creative design combined with our diligent execution will surely help contribute to Quartier des spectacles' international reputation.



Image courtesy of Stéphan Poulin Photographe



MAKING PUBLIC TRANSPORT MORE ATTRACTIVE

STOCKHOLM CENTRAL STATION, SWEDEN

Stockholm Central Station is the busiest station on the Stockholm commuter network, with **60 million passengers a year and a prognosis of 150 million passengers a year by 2030**. Commuter trains will move to the new City Line in 2017. A **new track in a tunnel** under the city centre and Stockholm City Station, and a **new underground station for commuter trains** below T-Centralen will be built. This is the only Stockholm underground station where all metro lines meet. Our mandate included **rail design and engineering as well as strategic consulting**, in order to raise capacity and speed while increasing safety. Our experts demonstrated their innovation during the station development, with challenging conditions related to high traffic on the existing lines and very limited space.



LARGE- SCALE COAL TO BIOFUEL CONVERSION

VÄSTHAMNSVERKET POWER STATION, SWEDEN

We pioneered the conversion of a power plant in Helsingborg from 100% coal-fired to 100% biofuel (biopellets), **on a scale that had never been attempted before**. Our team even ensured that the **energy efficiency of the plant was maintained**. The project has become an example for the world and has been presented at several international clean energy conferences.



Image courtesy of Öresundskraft



A PLANT FOR FUTURE ENERGY

LITHIUM IRON PHOSPHATE PLANT, CANADA

This new **lithium iron phosphate (LiFePO₄) production plant** is located in Candiac, Quebec and has a capacity of 2,400 tons per year. We provided engineering, procurement and construction management services for the **world's first full-scale production plant for this type of process**. The plant includes a production unit, administrative offices, laboratories, as well as a warehouse.



A FIRST IN CANADA

GASPÉ MINE, CANADA

This CAN\$116-million site rehabilitation program, conducted by Glencore Canada Corporation, is the **first mining operation and copper smelter decommissioning project in Canada**. We were the main environmental consultants for the rehabilitation of the mine and the residential properties that were affected in the nearby towns of Gaspé and Murdochville. Having first served as owner representative, we later took on the engineering, procurement and construction management role and finalized the project. The project **won the prestigious Schreyer Award**, one of the most coveted engineering awards in Canada.





MULTIBILLION DOLLAR EXPLORATION

LONG LAKE OIL SANDS PROJECT, CANADA

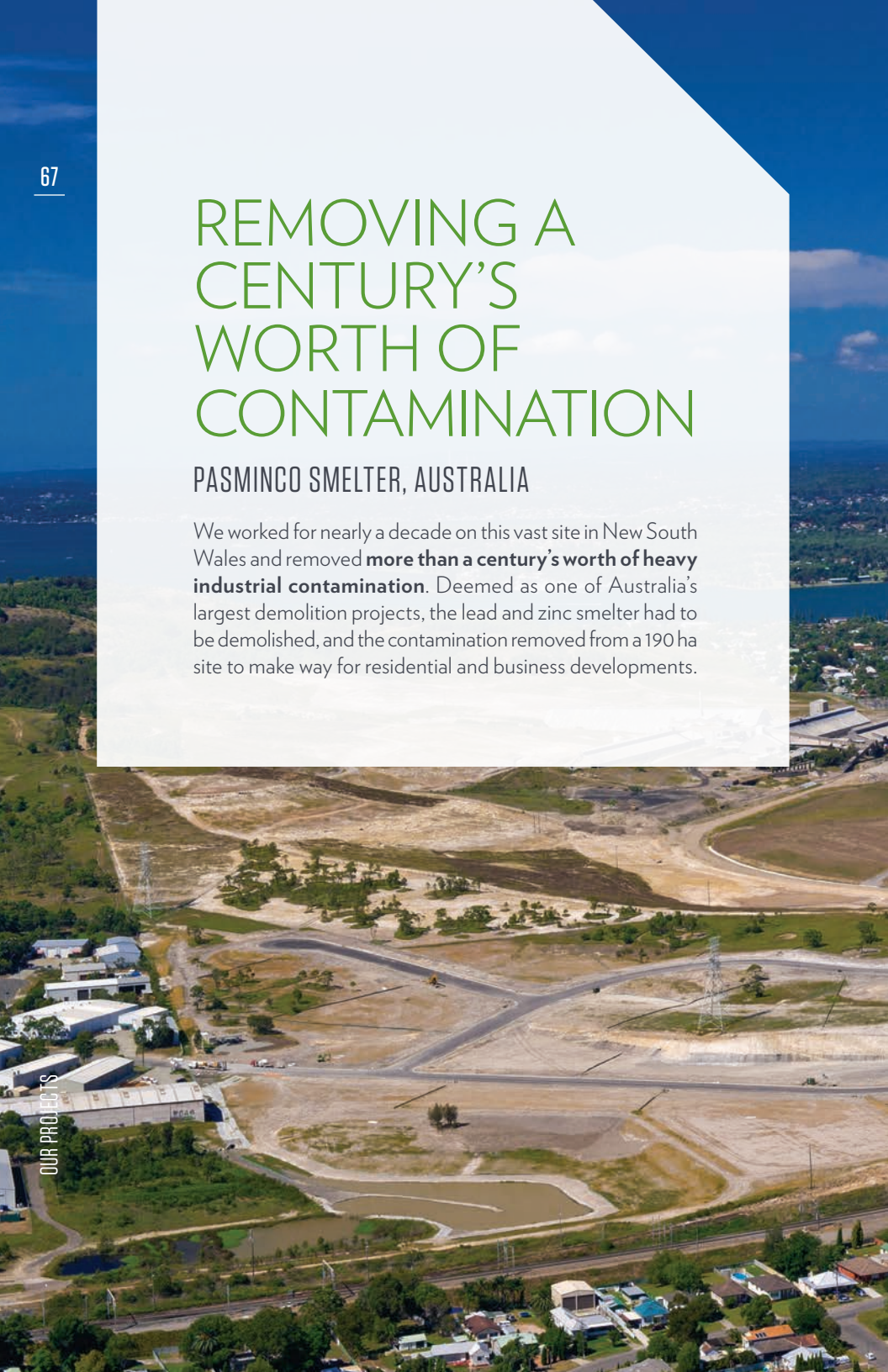
In 2003, Nexen contracted us to provide **surveying services** for its Long Lake Oil Sands Project in northeastern Alberta, which produces **72,000 barrels of bitumen per day**. The scope of this multibillion dollar project expanded to include survey work for additional water wells, and a large pipeline corridor. We ultimately secured an ongoing contract for all civil work and Nexen continues to be a key client for us today.



REMOVING A CENTURY'S WORTH OF CONTAMINATION

PASMINCO SMELTER, AUSTRALIA

We worked for nearly a decade on this vast site in New South Wales and removed **more than a century's worth of heavy industrial contamination**. Deemed as one of Australia's largest demolition projects, the lead and zinc smelter had to be demolished, and the contamination removed from a 190 ha site to make way for residential and business developments.





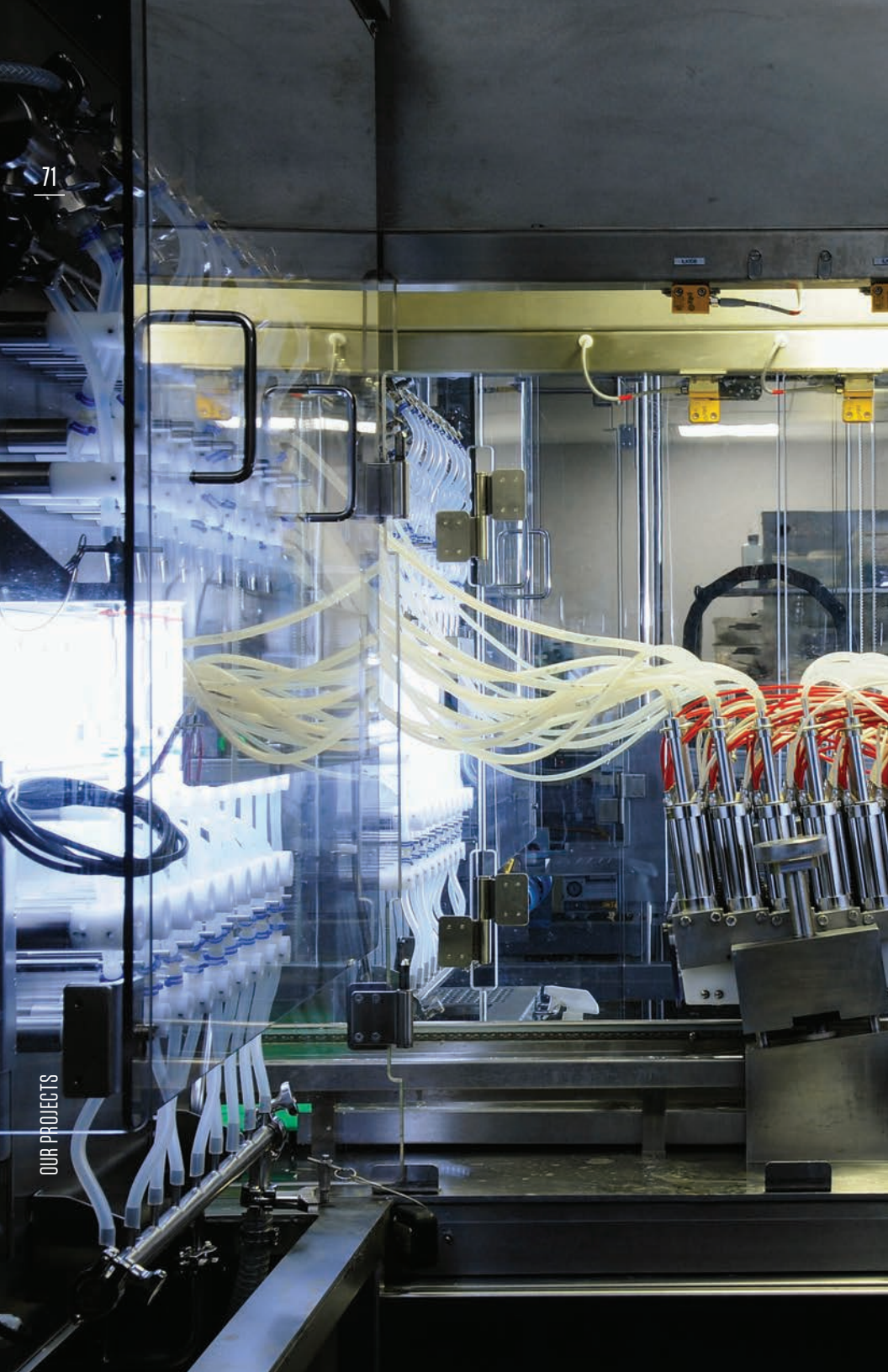
GETTING OUR HANDS DIRTY

US COAST GUARD HEADQUARTERS – SOIL REMEDIATION, US

Former St. Elizabeth's Campus was a **historic brownfield site** that suffered from historical ash-fill and contaminated soil. In order to prepare the terrain for new development, we conducted environmental pre-characterization to **properly handle and dispose of impacted materials**. We then **oversaw the removal of more than one million tons of soil**, including more than 600,000 tons of ash and contaminated soil in less than 10 months.



Image courtesy of Judy Davis/Hoachlander Davis Photography





PANDEMIC READINESS IMPROVEMENTS IN THE UK

MEDIMMUNE MANUFACTURING FACILITY, SPEKE, UK

We provided innovative engineering services for the **egg-based bulk vaccine manufacturing facility**. The project included manufacturing process upgrades through integration and automation of new and existing equipment. This resulted in yield increases as well as labour, reject and waste reductions at every process stage. The biggest challenge was to ensure safe entry of agricultural equipment into the sterile section of the plant. The project was recognized with the **Facility of the Year Award** for Equipment Innovation.

TOGETHER WE ARE BETTER

34,500 individuals, 500 offices and 40 countries. We are WSP | Parsons Brinckerhoff. An unparalleled pool of knowledge, cultures and expertise.

Seizing every opportunity, we've achieved phenomenal growth in the recent past. We are still a pure-play consultancy or, in other words, we act as a trusted advisor to our clients and we offer best-in-class professional consulting services, with no construction exposure.

And we are immensely proud of what we do. We draw on the diverse skills and capabilities of our employees to push the boundaries and to compete on the world's most exciting and complex projects. We have great confidence in this industry and our commitment to quality and excellence is the fuel that keeps us turning challenges into possibilities.





WWW.WSP-PB.COM

© 2016 WSP Global Inc. All rights reserved.

The contents of this publication may not be reproduced by any means in whole or in part, without prior written consent from the publisher.

GL-MK-BR-001-EN-201601

